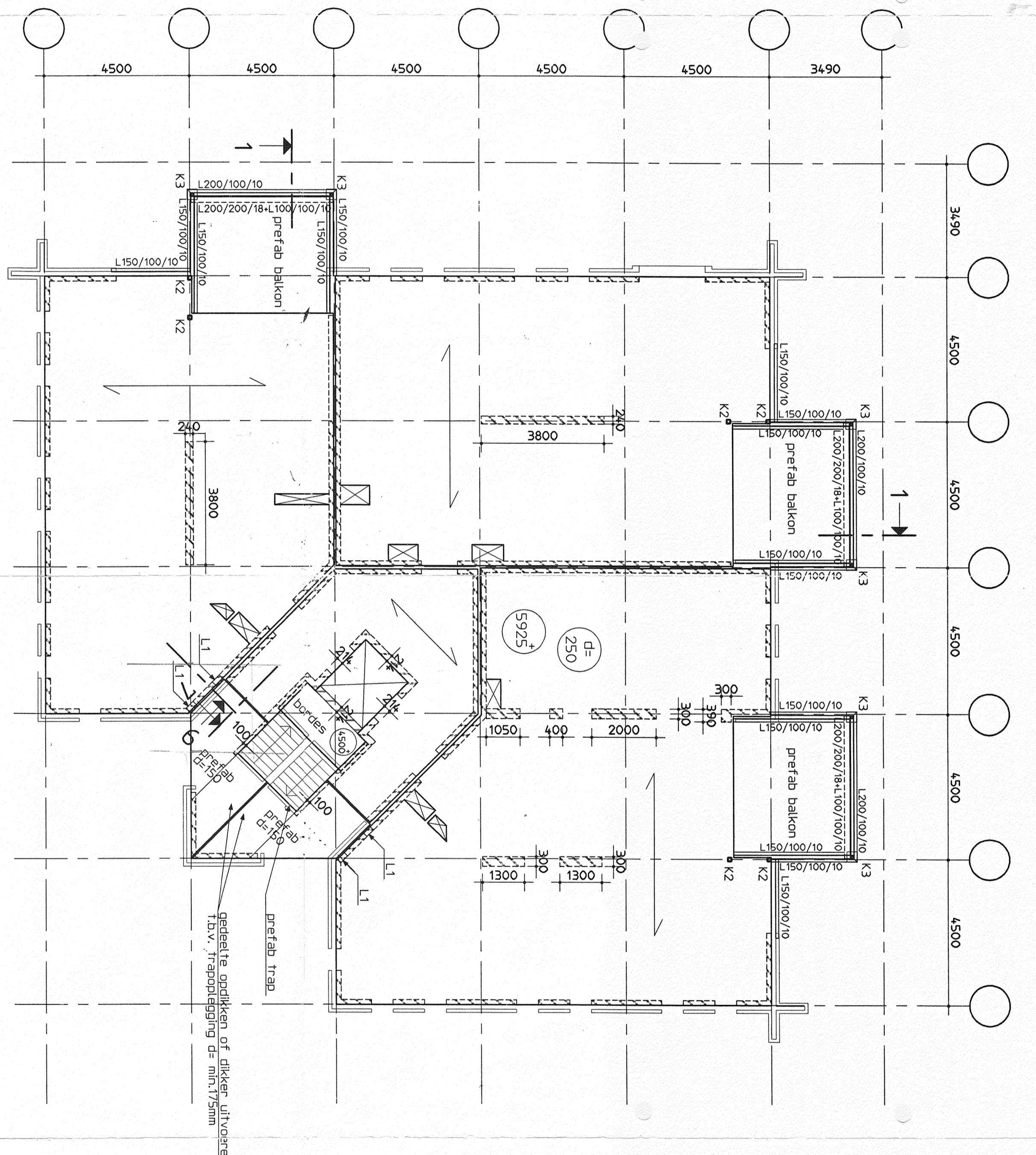
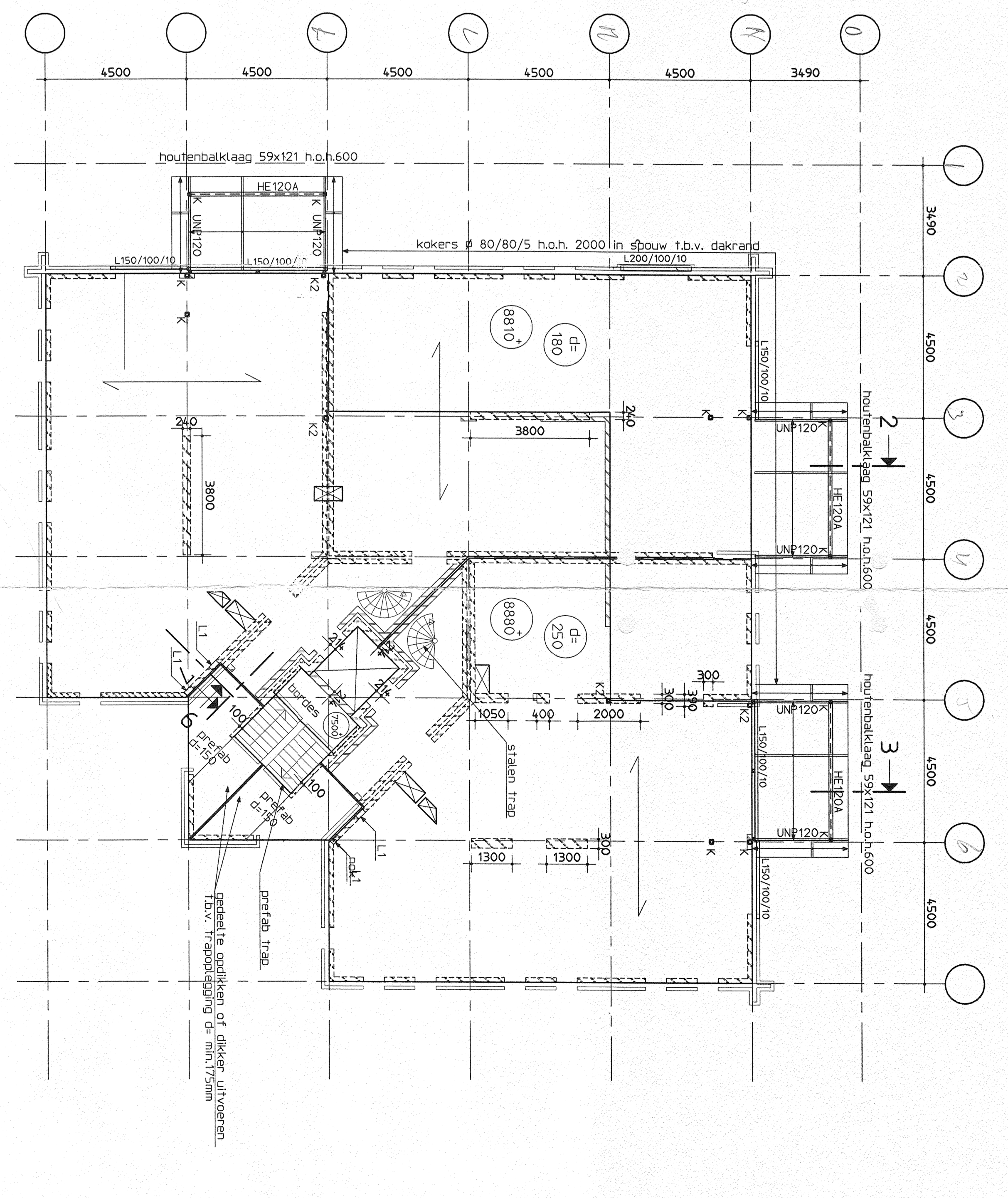


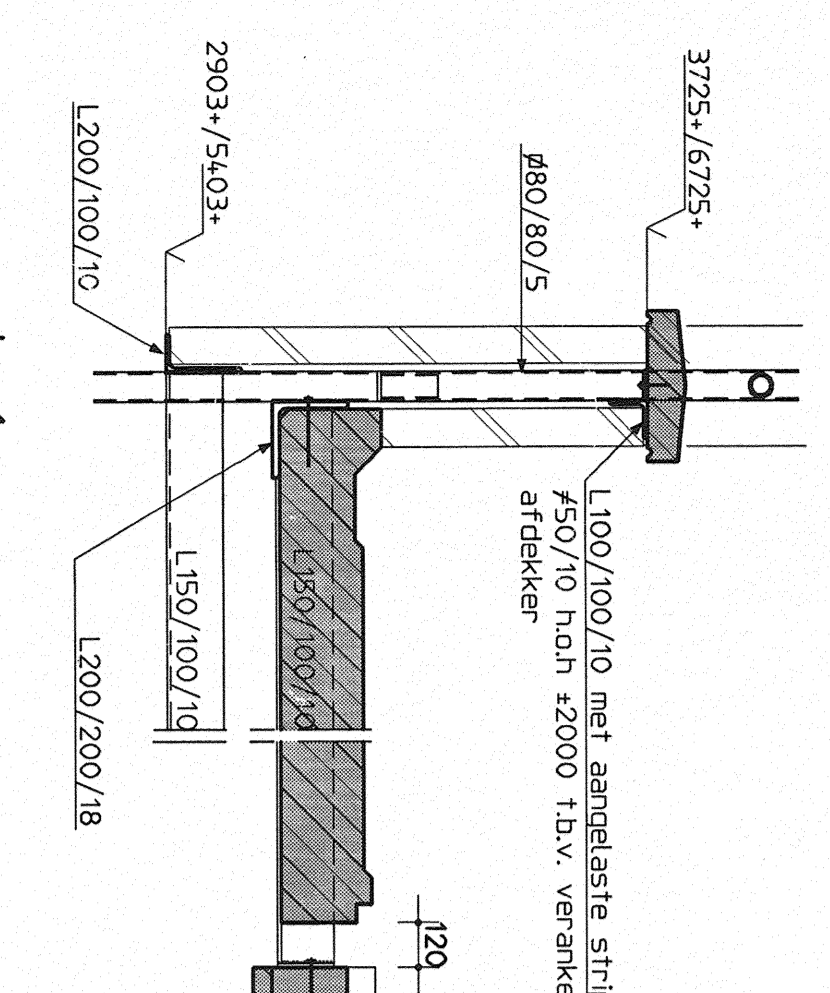
1e VERDIEPINGSVLOER



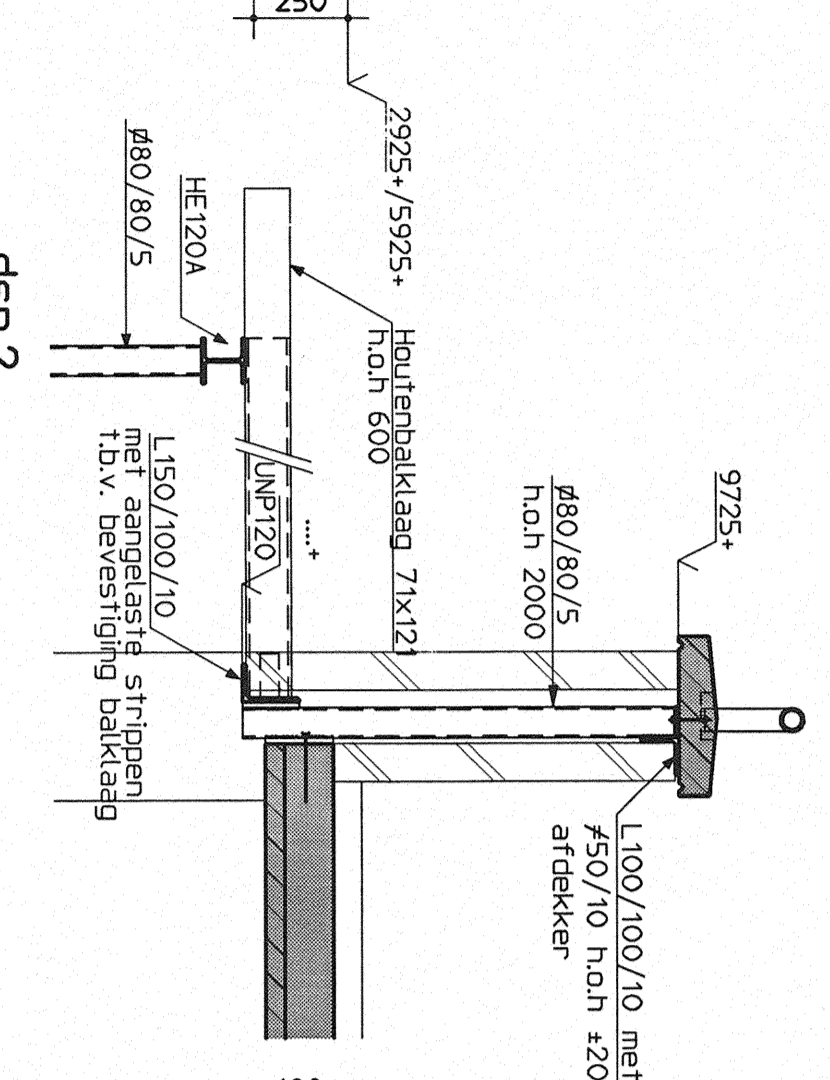
2e VERDIEPINGSVLOER



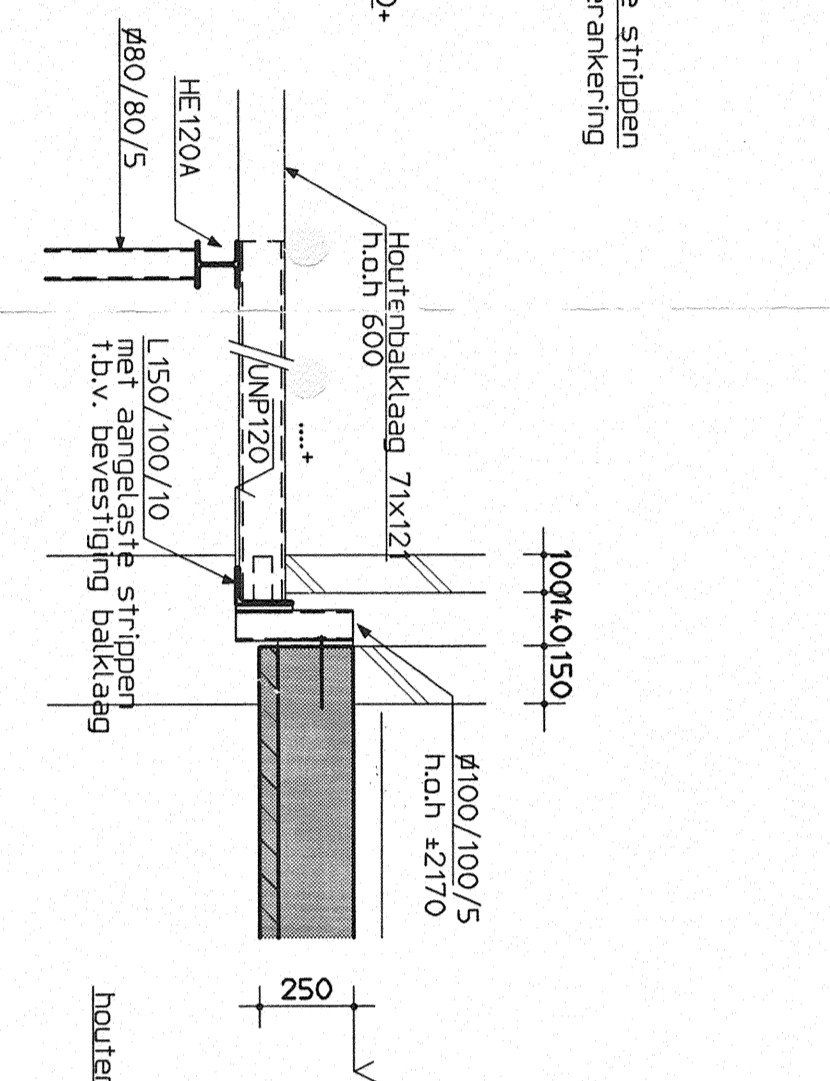
3e VERDIEPINGSVLOER



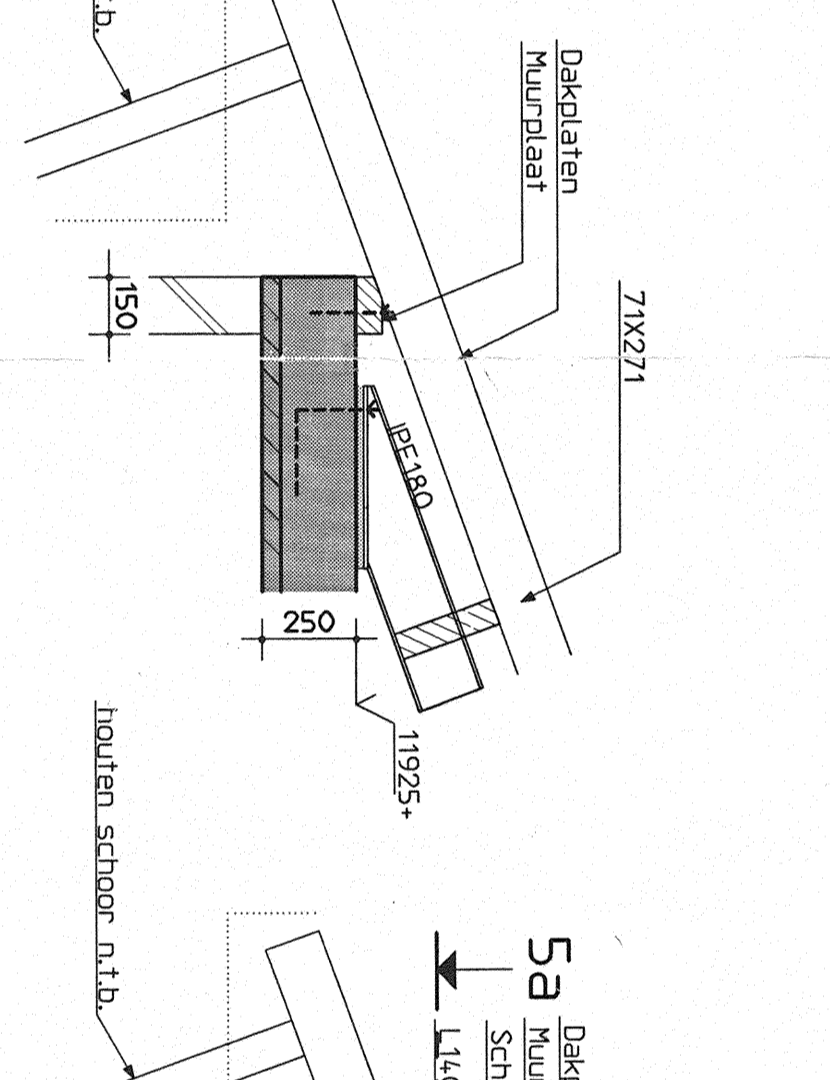
dsn.1



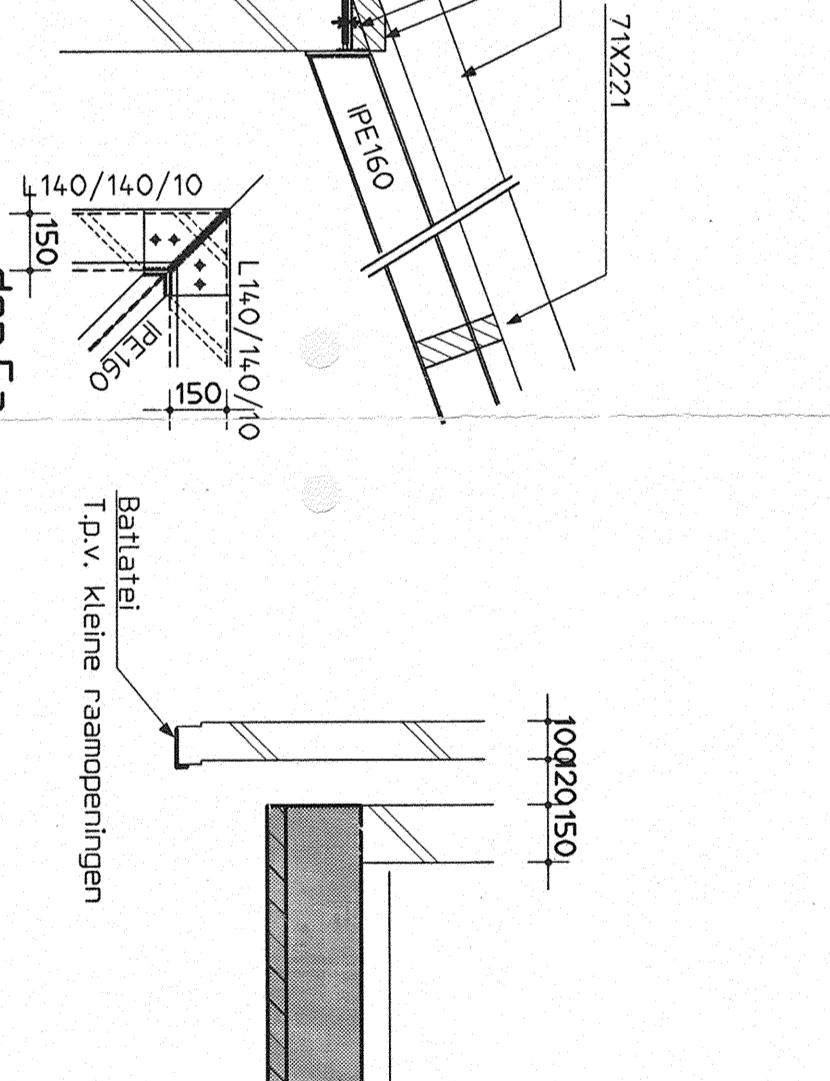
dsn.2



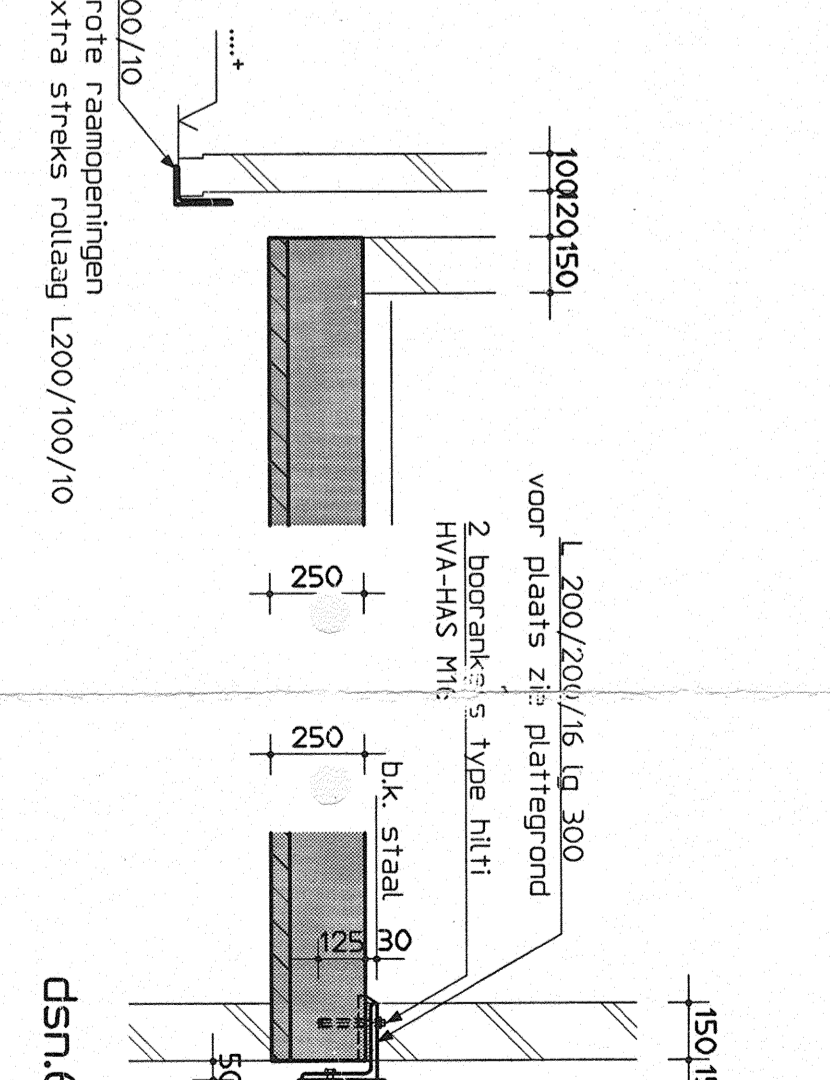
dsn.3



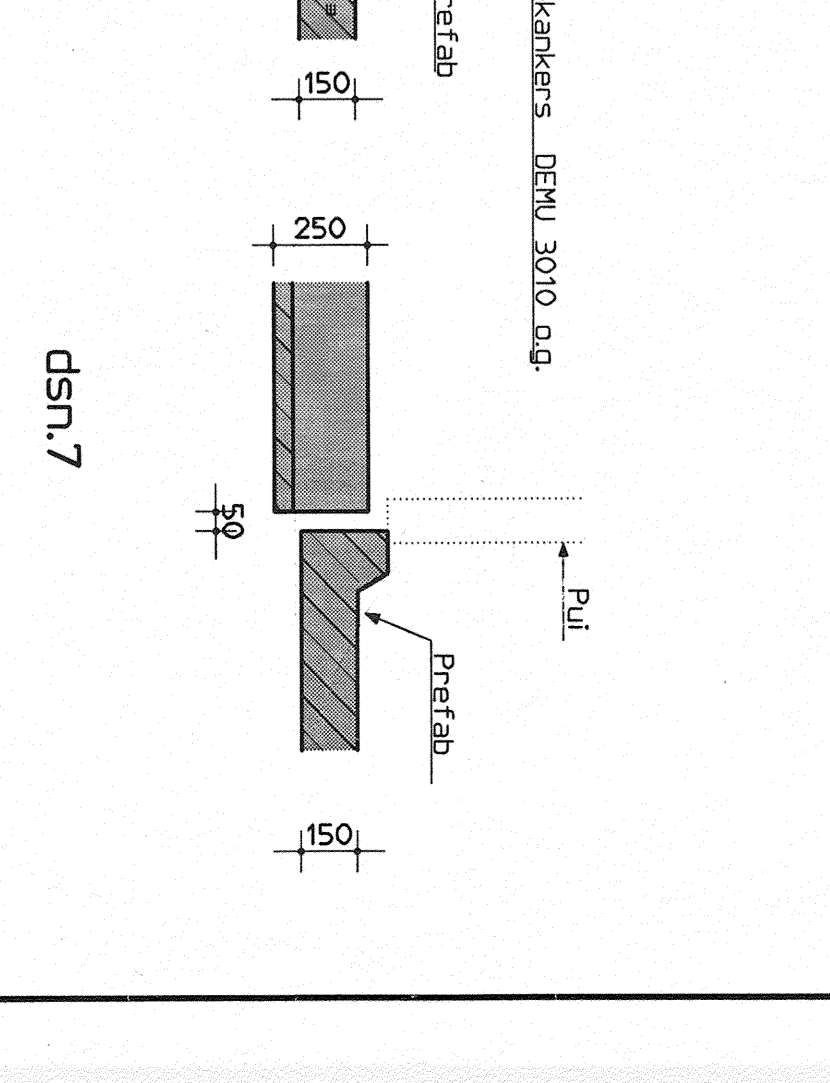
dsn.4



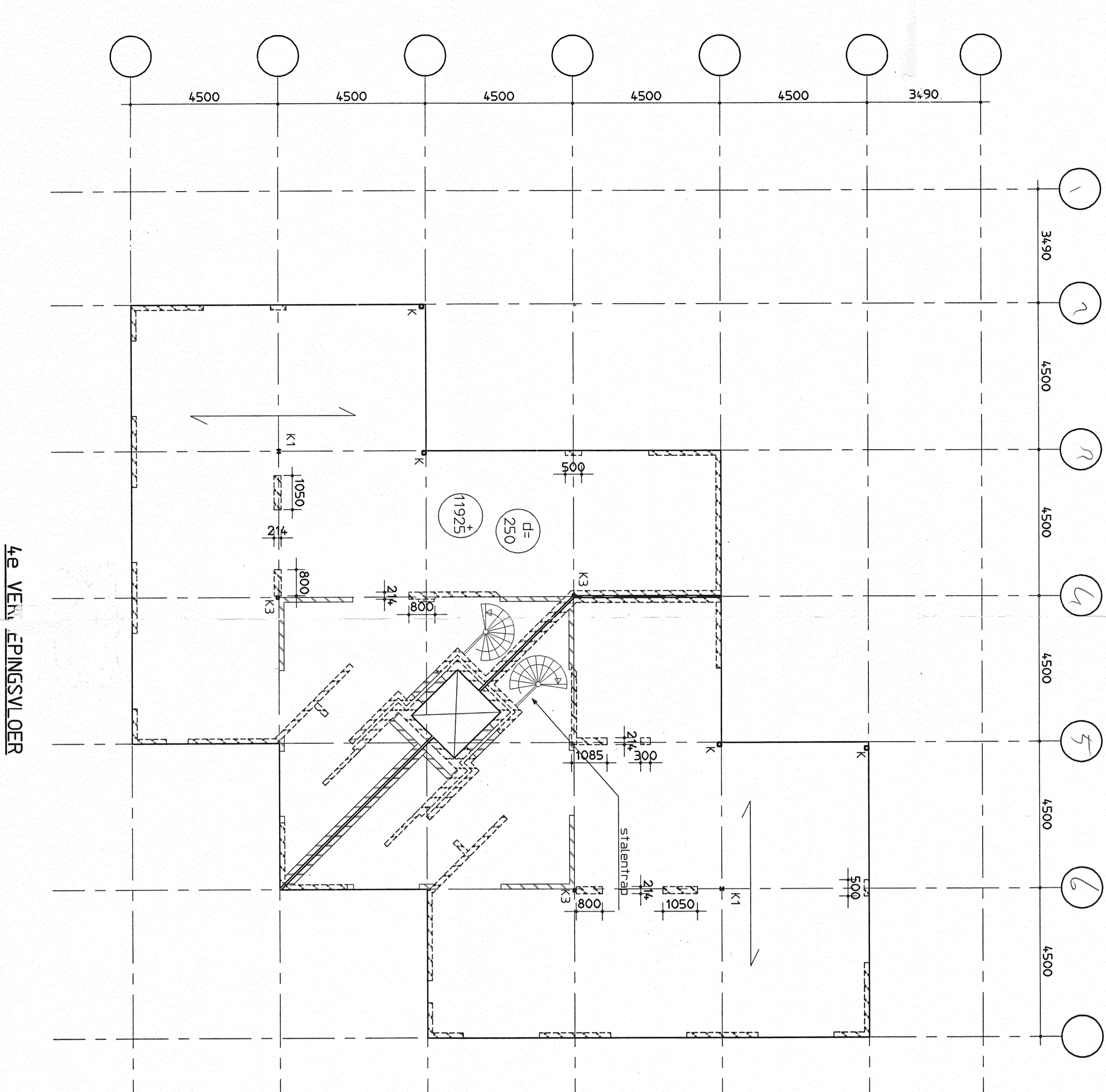
dsn.5



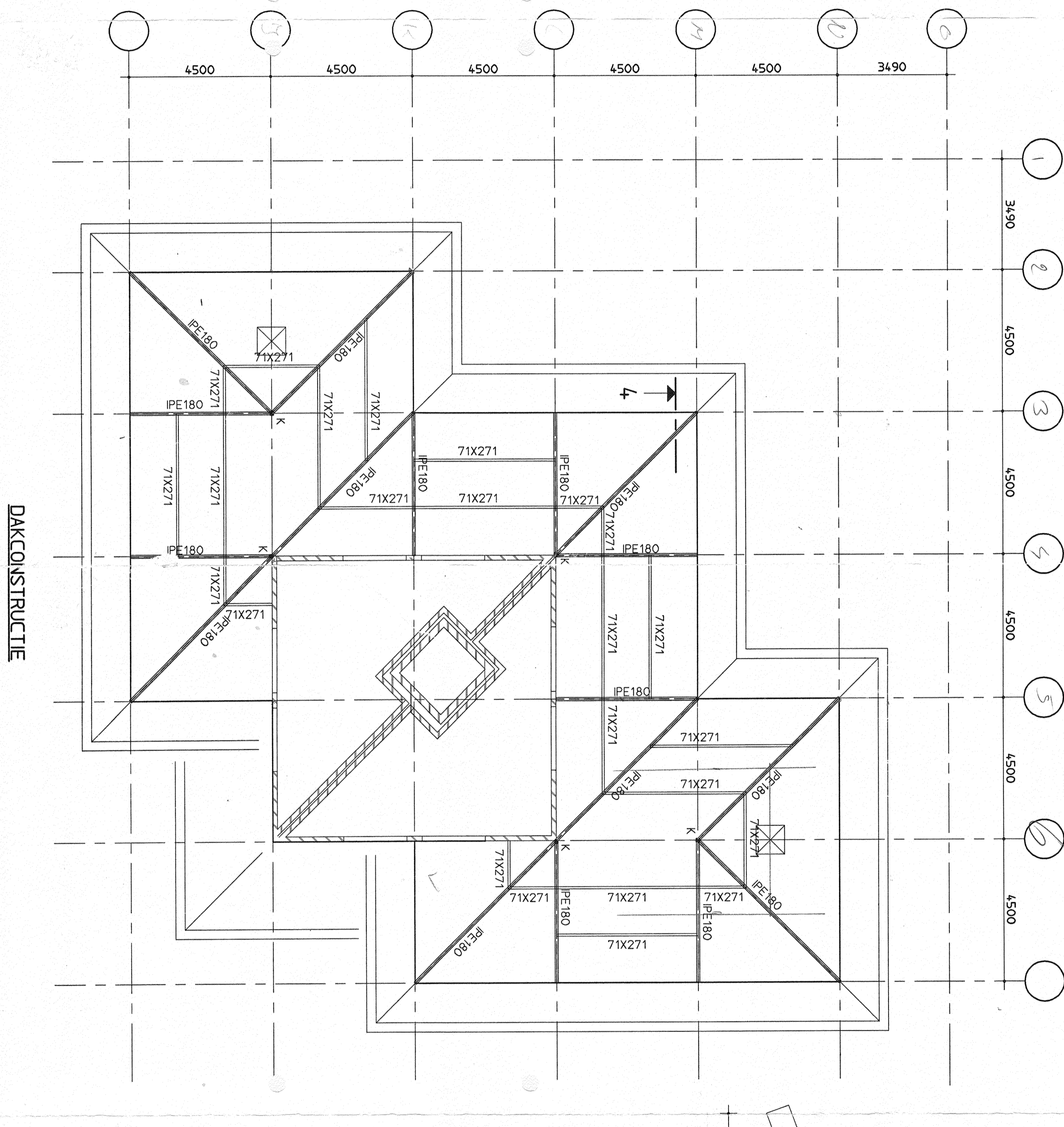
dsn.6



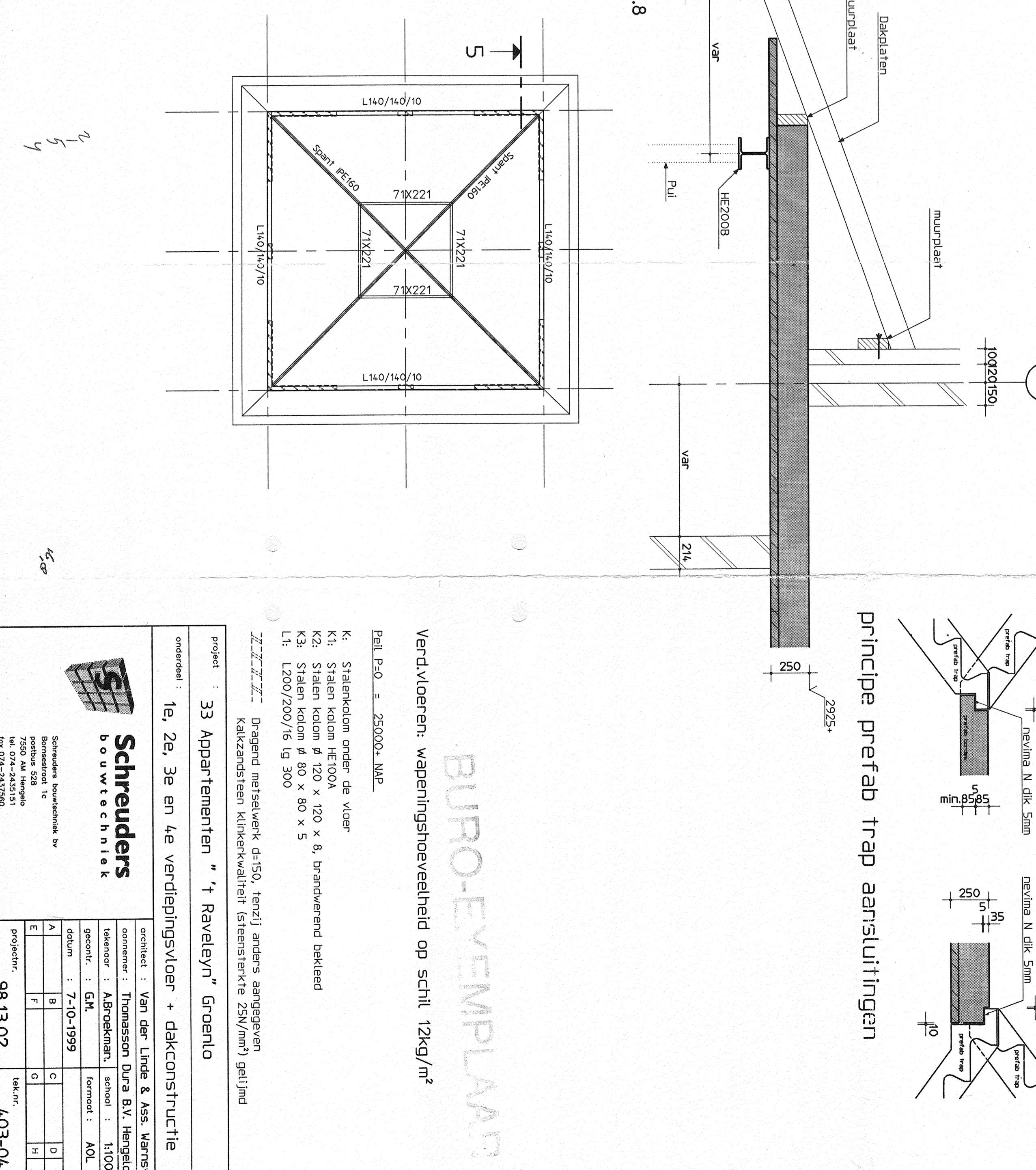
dsn.7



1e VERN. SPINNSVLOER



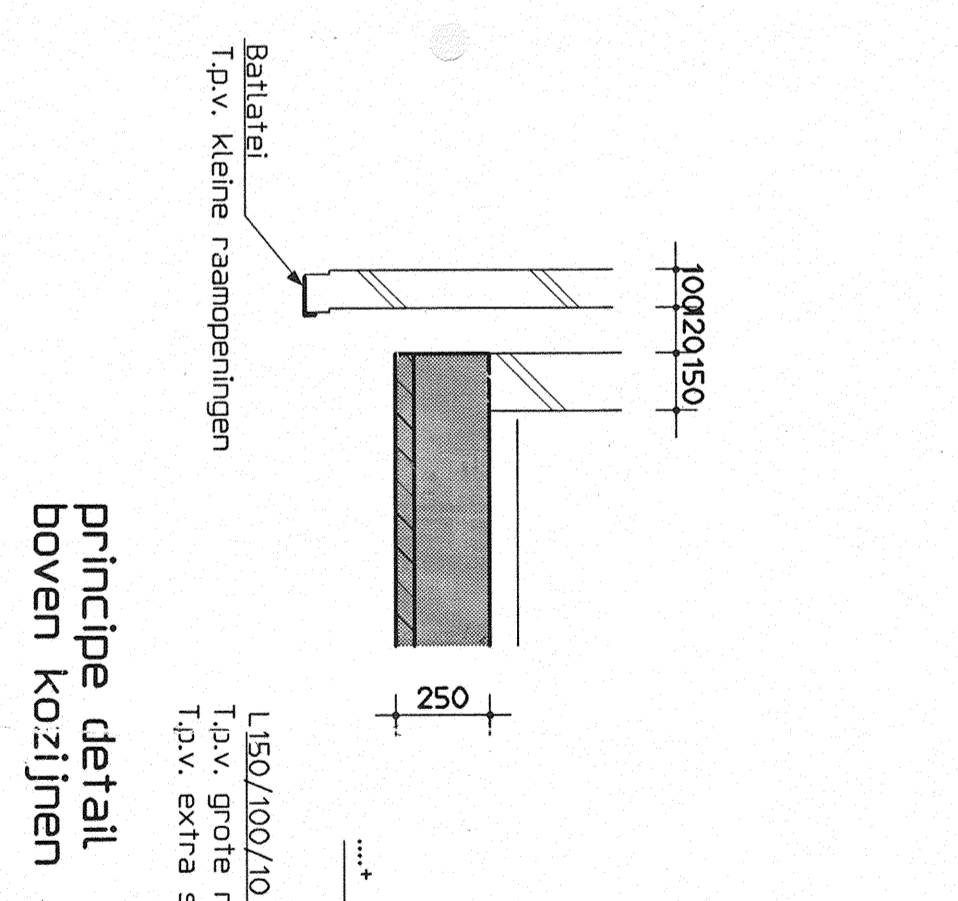
2e VERN. SPINNSVLOER



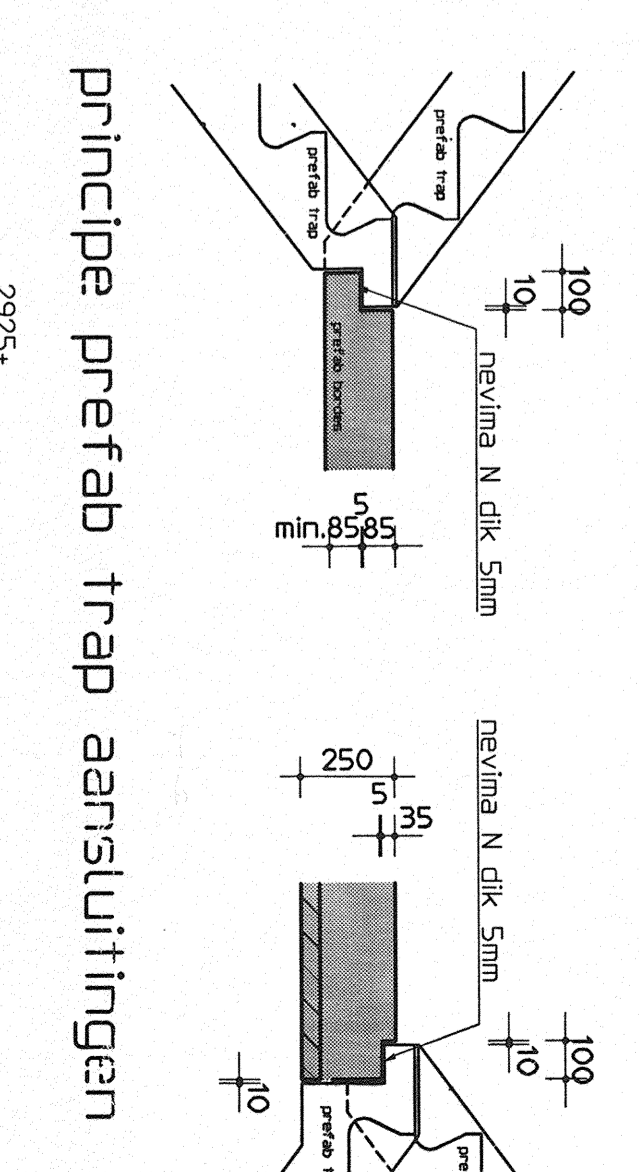
3e VERN. SPINNSVLOER



DAKCONSTRUCTIE



principe detail
boven kozijnen



principe prefab trap aansluitingen

BURO-EYEMPLAAT

Verduydenen: wapeningshoeveelheid op schil 12kg/m²

Belt P.0 = 25000, NWP

K: Stalen keton HE100A
 K2: Stalen keton # 120 x 120 x B, brandverend bekleed
 L1: L200/200/16 10 300

Project: 33 Appartementen "1 Ravelijn" Groenlo

ontwerper: Van der Linden & Aaz, Hengelo

aanvorder: A.B. Groenlo, Hengelo

datum: 1-7-10-1999

schalen: A, B, C, D, E, F, G, H, I, J, K, L, M, N, O, P, Q, R, S, T, U, V, W, X, Y, Z

productie: 98.13.02

tek.nr.: 403-04

Schreuders BOUWTECHNIEK

Stadsmaatschappij Groenlo

Postbus 238
 7200 AA Groenlo
 Tel: 0574-243950